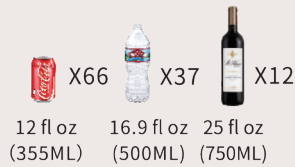
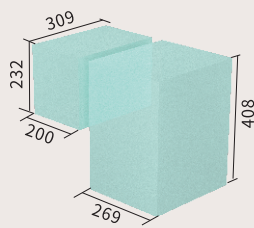
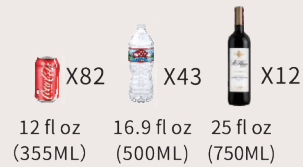
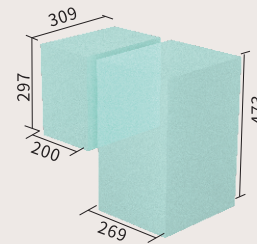


SECTA45

SECTA55


Features

- Dual compartments with individual temperature control.
- Name brand compressor for superior cooling performance.
- Three stage battery protection system prevents vehicle running out of battery.
- Car & home dual use (DC/AC), and also charge by solar.
- Shockproof and du ra bie design for handling rocky road.
- Specific parts: cupholder door, interior LED light, APP control, interior drain plug, optional detachable battery, plastic cutting board and wire storage baskets.
- LED display touch control panel makes temperature adjustment easy.
- Safe to run less than a 45-degree angle in short time.
- Quiet operation, like living in quite suburb.
- Reverse fridge door design with individual lids, make door-opening more flexible.

MODEL:	SECTA45	SECTA55
TOTAL CAPACITY:	45.6L/48Quarts/1.61Cu. Ft.	54.2L/57Quarts/1.91Cu. Ft.
COMPARTMENT 1 (FRIDGE/FREEZER)	31.6L/33Quarts/1.12Cu.Ft.	36.3L/38Quarts/1.28Cu. Ft.
COMPARTMENT 2 (FRIDGE/FREEZER)	14L/15Quarts/0.49Cu. Ft.	17.9L/19Quarts/0.63Cu. Ft.
POWER SUPPLY:	12/24V DC,100-240V AC	12/24V DC,100-240V AC
RATED CURRENT:	DC 5.0A/2.SA AC 1.2A-0.5A	DC 5.0A/2.SA AC 1.2A-0.5A
RATED POWER INPUT:	60W	60W
FRIDGE DIMENSION(MM) (L X W X H INCH):	647*400*506mm 25 1/2*15 3/4*19 15/16inch	647*400*571mm 25 1/2*15 3/4*22 1/2inch
PACKING SIZE(MM) (L X W X H INCH):	691 *491*571mm 27 1/4*19 3/8*22 1/2inch	691 *491 *636mm 27 1/4*19 3/8*25 1/16inch
NET WEIGHT:	16.5kg/36.4lbs	7.2kg/37.9lbs
GROSS WEIGHT:	18.1kg/39.9lbs	18.9kg/41.7lbs
FRIDGE/FREEZER (COMBINATION):	-20~20°C (-4~68°F)	-20~20°C (-4~68°F)
FCL QUANTITY:	144/300/300(20'/40'/40'HQ)	108/225/300(20'/40'/40'HQ)
NOISE LEVEL:	<45dB	<45dB

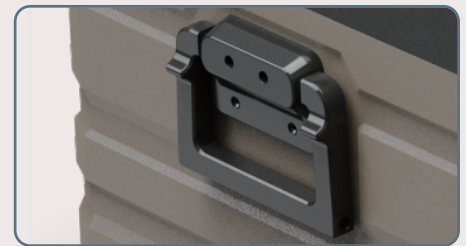
*Due to product improvement, the technical information might be different from actual information, please refer to the rating label on the product. (Note:±3°C temperature difference is permitted)



Interior light



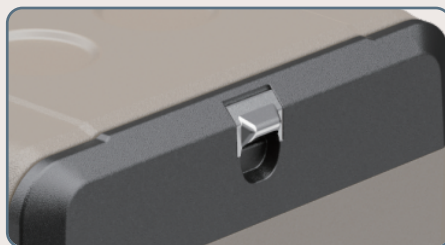
Cutting board



Heavy duty handle



Car/Home/Solar(optional)



Bottle opener



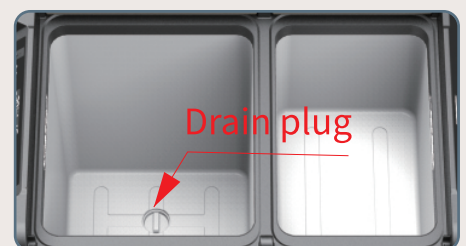
Digital display (°C/° F)



Detachable battery(optional)



Door latch



Interior chamber