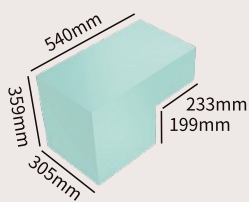
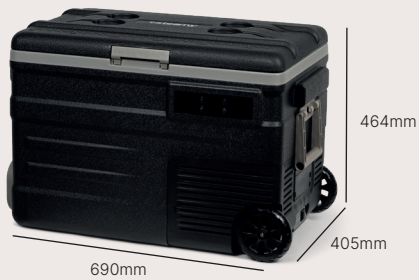
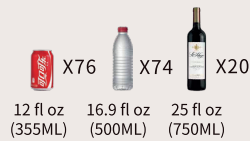
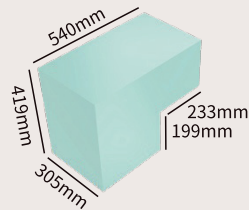
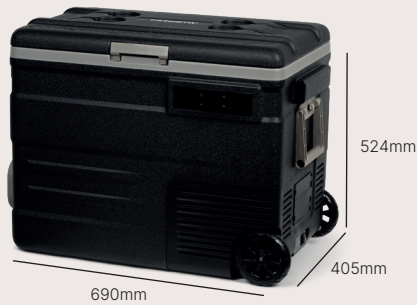
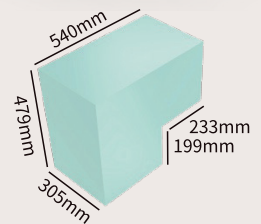


SECU45

SECU55

SECU65


Features

- Freezes Without lee: -4°F(-20°C) to 68°F(20°C) powerful chilling performance, can be used as a fridge or freezer.
- CFC free and great heat insulation, eco-friendly and safe choice.
- Three-stage Car Battery Protection: With temperature memory function & three-stage battery protection system to prevent the vehicle from running out of battery.
- Specific parts: Digital display control panel, door latch, cup holder door and measuring design, heavy-duty handle, robust wheels, APP control.
- Fit Anywhere: Car/Jeep/Truck/Home/Dorm/Cottage/Garage/RV /Boat/Outdoor (DC/AC/Solar)
- Rugged design: Shockproof and durable design for handing rocky road. Incline Operation up to 45° angle in short time.
- Quiet operation: less than 45db, just like living in a quiet suburb.
- Adjustable running mode: Two different modes can be adjusted as need. (Fast cooling / Energy saving).

MODEL:	SECU45	SECU55	SECU65
TOTAL CAPACITY:	45.5L/48Quarts/1.61Cu. Ft.	55.1L/58Quarts/1.95Cu. Ft.	64.6L/68Quarts/2.28Cu. Ft.
POWER SUPPLY:	12/24V DC, 100~240V AC	12/24V DC, 100~240V AC	12/24V DC, 100~240V AC
RATED CURRENT:	DC 5.0A/2.5A AC 1.2A-0.5A	DC 5.0A/2.5A AC 1.2A-0.5A	DC 6.0A/3.0A AC 1.5A-0.7 A
RATED POWER INPUT:	60W	60W	60W
FRIDGE DIMENSION(MM) (L X W X H INCH):	690*405*464mm 27 3/16*15 15/16*18 5/16inch	690*405*524mm 27 3/16*15 15/16* 20 5/8inch	690*405*584mm 27 3/16*15 15/16*23inch
PACKING SIZE(MM) (L X W X H INCH):	750*470*520mm 29 9/16* 18 1/2 *20 1/2inch	750*470*580mm 29 9/16* 18 1/2 *22 13/16inch	750*470*640mm 29 9/16* 18 1/2 *25 3/16inch
NET WEIGHT:	14.8kg/32.63lbs	15.8kg/34.83lbs	16.5kg/36.381bs
GROSS WEIGHT:	7.1kg/37.7lbs	18.3kg/40.31bs	19.3kg/42.5lbs
FRIDGE/FREEZER (COMBINATION):	-20~20°C (-4~68° F)	-20~20°C (-4~68° F)	-20~20°C (-4~68° F)
FCL QUANTITV:	144/300/375 (20/40/40'HQ)	144/300/300 {20/40/40'HQ}	108/225/300 {20/40/40'HQ}
NOISE LEVEL:	<45dB	<45dB	<45dB

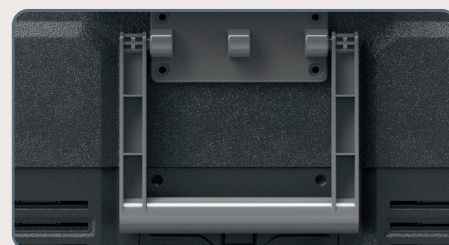
*Due to product improvement, the technical information might be different from actual information, please refer to the rating label on the product. (Note:±3°C temperature difference is permitted)



Functional top



Digital display



Convenient handle



Detachable battery (optional)



Door latch



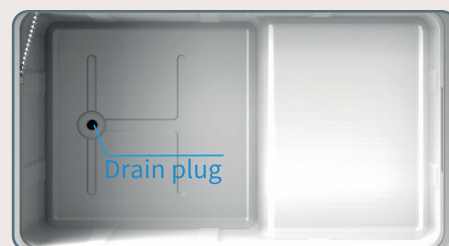
DC/AC/Solar (optional)



Heavy duty pull rod



Durable wheels



Interior chamber